

ORR ROAD RESURFACING

LOWNDES COUNTY, GEORGIA

PREPARED FOR:

LOWNDES COUNTY BOARD OF COMMISSIONERS

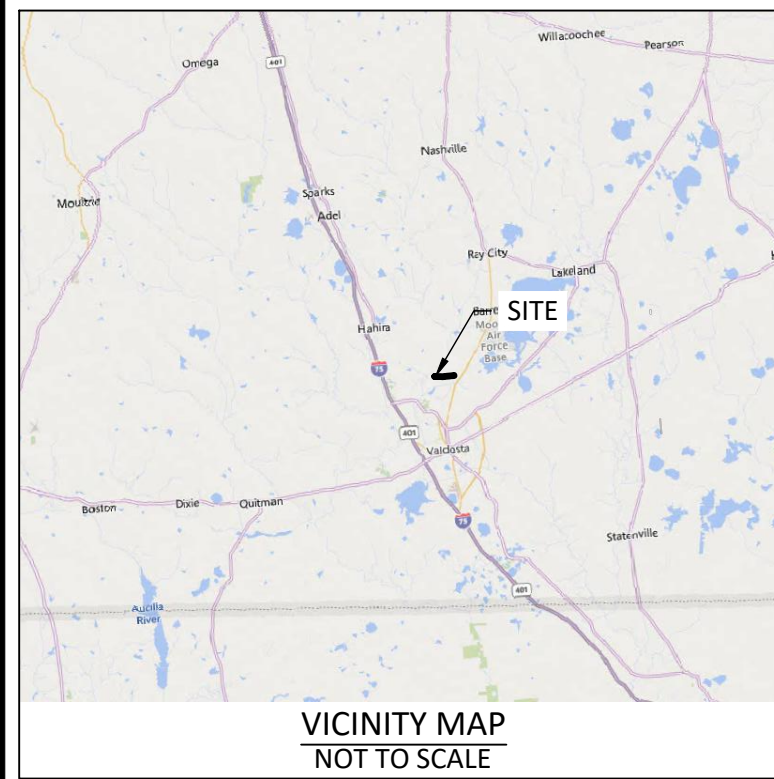
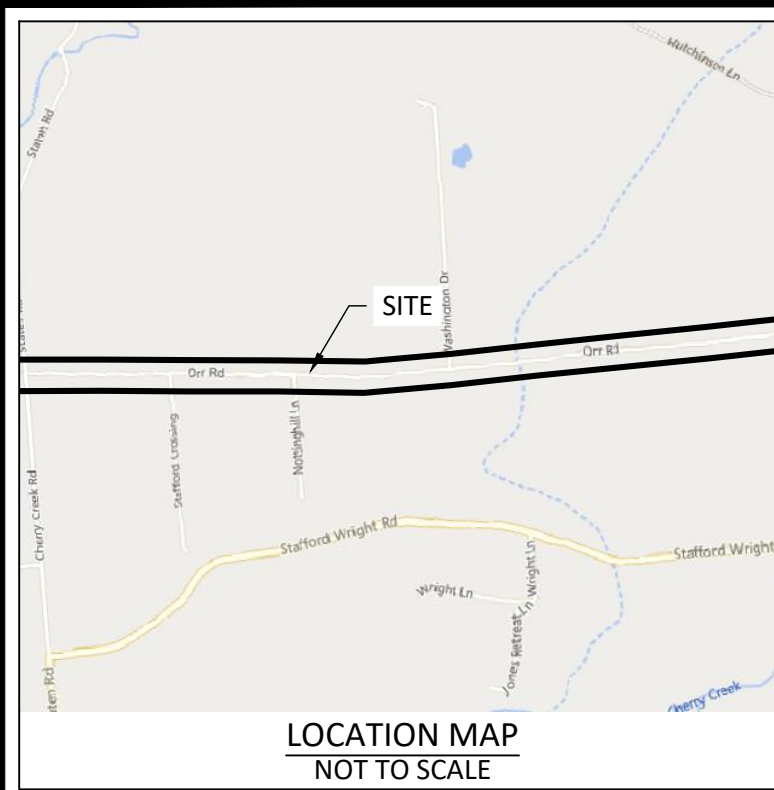


DATE:

OCTOBER 31, 2025

PI Number: 0016273

IGTIA: 2402103



PROPOSED LINE LEGEND	
PROPERTY LINE	———
RIGHT-OF-WAY	———
EASEMENT	———
SETBACK / BUFFER	———
OVERHEAD POWER	— P — P —
OVERHEAD TELECOMM.	— T/C — T/C —
BUILDING LINE	//////
SANITARY SEWER	— SS — SS —
SANITARY SEWER FORCE MAIN	— FM> — FM> —
STORM SEWER	———
WATER LINE	— W — W —
NATURAL GAS	— G — G —
SURFACE MAJOR CONTOUR	———
SURFACE MINOR CONTOUR	———
DITCH / SWALE	—>>—>>—>>—>>—
SILT FENCE	— X — X — X — X —
LIMITS OF DISTURBANCE	———

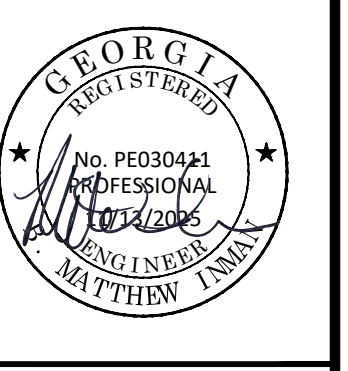
PROPOSED SYMBOL LEGEND	
POWER POLE, LIGHT POLE (PP, LP)	PP LP
BACK FLOW PREVENTER (RPZ, DDCV)	DDCV BFP
FIRE DEPT. CONNECTION / POST INDICATOR VALVE / HYDRANT	FDC PIV HYD
METERS (WM, GM)	WM GM
VALVES (WV, GV)	WV GV
CLEANOUT (ST CO, SS CO)	ST CO SS CO
MANHOLES (STMH, SSMH)	ST SS
GRATE INLETS (GI, HGI)	2'x2' DBL 2'x2' 3'x2' HGI
CURB INLETS (STD., SWCI, DWCI)	STD. SWCI DWCI
FLARED/SAFETY END SECTION (FES, SES)	FES SES
HEADWALL (HW)	HW
OUTLET CONTROL STRUCTURE (OCS)	OCS
SIGNS	TRAFFIC MONUMENT P/CON DBL TRAFFIC
DIRECTIONAL TRAFFIC ARROWS	↑ ↓ ↗ ↘
BOLLARD / WHEEL STOP	•

Sheet Number	Sheet Title
C1.0	PROJECT COVER
C1.1	GENERAL NOTES
C2.0 - C2.4	ROADWAY RESURFACING PLAN
C3.0 - C3.1	CONSTRUCTION DETAILS

No.	DATE	DESCRIPTION
1	11-13-25	REVISED PER COUNTY COMMENTS
2		
3		
4		
5		
6		



PROJECT COVER
ORR ROAD RESURFACING



OWNER DEVELOPER	LOWNDES COUNTY BOARD OF COMMISSIONERS 327 N ASHLEY STREET VALDOSTA, GEORGIA 31601 (229) 671-2442 mfletcher@lowndescounty.com
PROJECT LOCATION	ORR ROAD VALDOSTA, GEORGIA 31605
PROJECT AREA /	8,710 L.F.
PROPOSED USE	ROAD RESURFACING
DISTURBED AREA	0.9 ACRES

PROJECT NO. 25-25153
DATE: 11/06/2025
DRAWN BY: BJM
CHECK BY: BMI
SHEET NO. C1.0

PROJECT AREA NOTES:

- 1. THE PROPOSED DEVELOPMENT IS LOCATED WITHIN THE RIGHT OF WAY OF ORR ROAD, VALDOSTA, GEORGIA 31605. THE INFORMATION SHOWN ON THESE PLANS IS BASED ON AERIAL IMAGERY AND SHOULD BE FIELD VERIFIED PRIOR TO COMMENCING CONSTRUCTION.
2. THE PROPOSED PROJECTS CONSISTS OF THE PAVEMENT OVERLAY OF AN EXISTING ASPHALT PAVED ROAD, WITH MINIMAL SHOULDER GRADING.
3. THE PROJECT AREA IS ±8,710 L.F. WITH A DISTURBED AREA OF 0.9 ACRES. (DISTURBED AREA) INCLUDES 4' SHOULDER GRADING ALONG EACH SIDE OF ROADWAY).
4. NO WETLANDS HAVE BEEN IDENTIFIED WITHIN THE PROJECT AREA.
5. NO STATE WATERS HAVE BEEN IDENTIFIED ON OR WITHIN TWO HUNDRED FEET (200').
6. THE RECEIVING WATERS FOR THE PROJECT HAVE BEEN IDENTIFIED AS UNNAMED TRIBUTARY OF CHERRY CREEK.
7. NO IMPAIRED WATERS HAVE BEEN IDENTIFIED WITHIN ONE (1) MILE OF THE PROJECT AREA.
8. THE PROPERTY SHOWN WITHIN THE PLANS IS LOCATED IN FLOOD ZONE X AS PER FLOOD INSURANCE RATE MAP FOR LOWNDDES COUNTY, GEORGIA, AND SHOWN ON MAP NO. 13185C0120E, WITH AN EFFECTIVE DATE OF 09/26/2008. FLOOD ZONE X DENOTES AREA OF MINIMAL FLOOD HAZARD.
9. REPORTS:
A. NO GEOTECHNICAL INVESTIGATION HAS BEEN PERFORMED FOR THE PROJECT. THE CONTRACTOR SHALL NOTIFY THE ENGINEER WITHIN TWENTY FOUR (24) HOURS OF ANY UNSUITABLE SUBSURFACE MATERIAL ENCOUNTERED DURING CONSTRUCTION ACTIVITIES.
B. NO ENVIRONMENTAL ASSESSMENT HAS BEEN PERFORMED FOR THE PROJECT. THE CONTRACTOR SHALL NOTIFY THE ENGINEER WITHIN TWENTY FOUR (24) HOURS OF ANY ENVIRONMENTAL CONCERNS ENCOUNTERED WITHIN THE PROJECT AREA.
C. NO ACM SURVEY HAS BEEN PERFORMED. THE CONTRACTOR SHALL TAKE PRECAUTIONS AS NEEDED WHEN HANDLING ANY MATERIAL SUSPECTED TO CONTAIN ANY ASBESTOS. THE CONTRACTOR SHALL PROPERLY DISPOSE OF ANY MATERIAL CONTAINING ASBESTOS.

GENERAL NOTES:

- 1. ALL CONSTRUCTION DOCUMENTS AND REPORTS ARE TO BE REVIEWED BY THE CONTRACTOR. THE CONTRACTOR SHALL BE FAMILIAR WITH THE PROJECT AREA BEFORE COMMENCING ANY CONSTRUCTION ACTIVITIES.
2. THE CONTRACTOR SHALL BE RESPONSIBLE FOR ENSURING ALL PERMITS ARE OBTAINED BEFORE COMMENCING ANY CONSTRUCTION ACTIVITIES. THE CONTRACTOR SHALL ENSURE ALL CONSTRUCTION STANDARDS AND SPECIFICATIONS ARE MET FOR THE PROJECT OF THE LOCAL OR STATE AUTHORITY FOR THE PROJECT AREA.
3. THE CONTRACTOR SHALL NOTIFY THE ENGINEER OF RECORD WITHIN TWENTY FOUR (24) HOURS OF ANY DISCREPANCIES OR CONFLICTS OF ALL INFORMATION PROVIDED BY THE CONSTRUCTION PLANS FOR THE PROJECT SCOPE BASED ON UNSATISFACTORY FIELD CONDITIONS. THE CONTRACTOR SHALL NOT COMMENCE ANY CONSTRUCTION ACTIVITIES UNTIL ALL DISCREPANCIES, CONFLICTS, UNSATISFACTORY FIELD CONDITIONS, ETC. ARE RESOLVED.
4. THE CONTRACTOR SHALL PROVIDE A MINIMUM OF SEVENTY TWO (72) HOUR NOTICE TO THE UTILITIES PROTECTION CENTER PRIOR TO COMMENCING ANY CONSTRUCTION ACTIVITIES. THE CONTRACTOR SHALL PROVIDE ALL REQUIRED PROTECTION FOR ALL EXISTING UTILITIES WITHIN THE PROJECT AREA. THE CONTRACTOR SHALL REPAIR ANY UTILITIES DAMAGED DURING CONSTRUCTION AT NO COST TO THE OWNER OR DEVELOPER.
5. THE CONTRACTOR SHALL BE RESPONSIBLE FOR FURNISHING ALL FILL MATERIAL (CLEAN AND FREE OF DEBRIS AND ORGANIC MATERIAL) NEEDED FOR THE PROJECT UNLESS OTHERWISE INSTRUCTED BY THE OWNER OR DEVELOPER.
6. THE CONTRACTOR SHALL MAKE THEIR OWN INTERPRETATION OF ALL SITE CONDITIONS RELATED TO THE SCOPE OF THE PROJECT REGARDING GRADING. THE CONTRACTOR SHALL MAKE THEIR OWN DETERMINATION OF WHAT IS SUITABLE FILL OR WASTE MATERIAL AS RECOMMENDED BY THE GEOTECHNICAL REPORT.
7. ALL DATA SHOWN HEREON ARE BASED UPON FIELD INVESTIGATION OF THE PROJECT AREA AND AERIAL IMAGERY. THIS DATA SHALL BE USED AS INFORMATION ONLY AND IN NO WAY GUARANTEE OR BIND THE ENGINEER AS TO THE ACTUAL FIELD CONDITIONS.
8. ALL UNDERGROUND UTILITY INFORMATION SHOWN ON THE PLANS ARE BASED ON ABOVE GROUND STRUCTURES OR GROUND MARKINGS BY OTHERS. THE ENGINEER SHALL NOT BE HELD RESPONSIBLE FOR THE ACCURACY OR COMPLETENESS OF THE UNDERGROUND UTILITY INFORMATION SHOWN ON THE PLANS.

PROJECT CONTACTS:

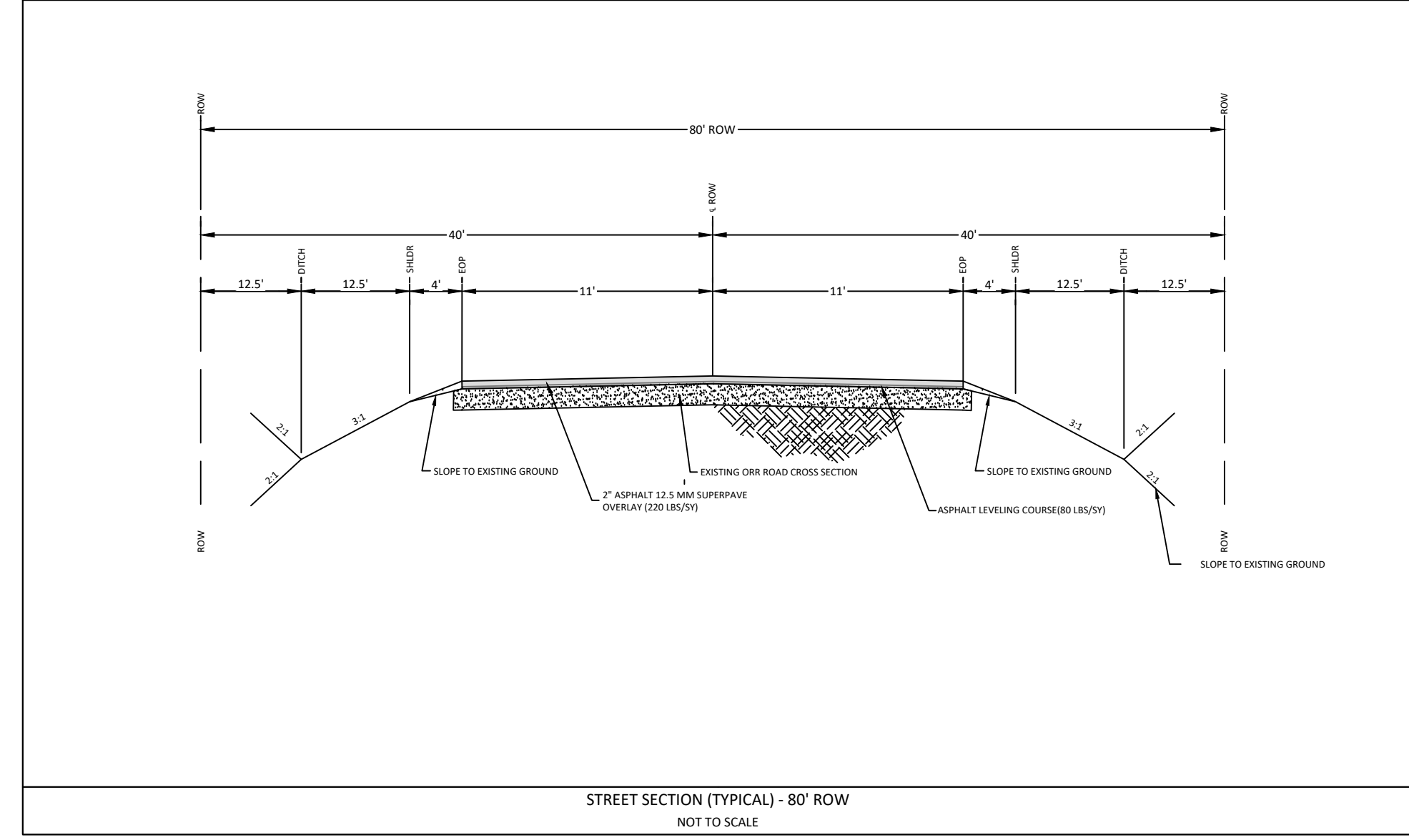
- 1. OWNER/DEVELOPER:
LOWNDDES COUNTY BOARD OF COMMISSIONERS
327 N ASHLEY STREET
VALDOSTA, GEORGIA 31601
(229) 671-2442
MFLETCHER@LOWNDESCOUNTY.COM
2. ENGINEER OF RECORD:
MATTHEW INMAN, P.E.
AXIS ENGINEERING CONSULTANTS, LLC.
2704 NORTH OAK STREET, BUILDING P
VALDOSTA, GEORGIA 31602
(229) 638-8595
MINMAN@AECONLLC.NET
3. PROJECT MANAGER:
MATTHEW INMAN, P.E.
AXIS ENGINEERING CONSULTANTS, LLC.
2704 NORTH OAK STREET, BUILDING P
VALDOSTA, GEORGIA 31602
(229) 638-8595
MINMAN@AECONLLC.NET

Signing and Marking Design Guidelines

GENERAL NOTES - STANDARD SIGNS
1. ALL STANDARD HIGHWAY SIGNS SHALL BE FABRICATED AND ERECTED IN ACCORDANCE WITH THE DETAILS SHOWN IN THE PLANS, THE MANUAL ON UNIFORM TRAFFIC CONTROL DEVICES, CURRENT EDITION, AND THE GEORGIA SPECIFICATIONS, SUPPLEMENTAL SPECIFICATIONS, AND/OR SPECIAL PROVISIONS.
2. SIGN ERECTION STATIONS ARE APPROXIMATE AND MAY BE ADJUSTED TO MEET FIELD CONDITIONS WHERE NECESSARY, BUT SHALL BE WITHIN THE LIMITATIONS SET FORTH IN THE MANUAL ON UNIFORM TRAFFIC CONTROL DEVICES, CURRENT EDITION. NO SIGN LOCATION SHALL BE CHANGED BY THE CONTRACTOR OR BY THE PROJECT ENGINEER WITHOUT PRIOR APPROVAL FROM THE OFFICE OF TRAFFIC OPERATIONS.
3. ALL STANDARD HIGHWAY SIGNS EXCEPT AS PROVIDED FOR IN *38 SHALL BE ERECTED AT A HEIGHT OF 7 FEET ABOVE THE NORMAL EDGE OF PAVEMENT TO THE BOTTOM OF THE SIGN OR ASSEMBLY. IF SIGNARMS IS PROVIDED OR EXISTING, THE SIGNS SHALL BE ERECTED AT A HEIGHT OF 7 FEET ABOVE THE SIGNARMS.
3A. *38-1 "DO NOT ENTER" SIGNS ALONG FREeways OR INTERSTATE EXIT RAMPs SHALL BE ERECTED AT A HEIGHT OF 3 TO 4 FEET ABOVE THE NORMAL EDGE OF PAVEMENT TO THE BOTTOM OF THE SIGN OR ASSEMBLY.
4. HORIZONTAL CLEARANCE FOR STANDARD HIGHWAY SIGNS ON INTERSTATE HIGHWAYS SHALL BE 32 FEET FROM THE NORMAL EDGE OF PAVEMENT TO THE NEARER EDGE OF THE SHOULDER. THE MINIMUM CLEARANCE IN NON-INTERSTATE CORN AND OUTSIDE SECTIONS SHALL BE AT LEAST 2 FEET FROM THE FACE OF CURB TO THE NEARER EDGE OF THE SIGN(S). SUPPLEMENTAL OR SECONDARY SIGNS MOUNTED LESS THAN 7' ABOVE SIDEWALK SHALL NOT PROJECT MORE THAN 4 INCHES HORIZONTALLY INTO THE PEDESTRIAN FACILITY. IN AREAS WITH SIDEWALK, SIGN POSTS SHALL PROVIDE A 4 FOOT MINIMUM SIDEWALK CLEAR WIDTH MEASURED FROM THE POST.
4A. HORIZONTAL CLEARANCE FOR STANDARD HIGHWAY SIGNS ON ALL OTHER ROADWAYS SHALL BE 6 FEET FROM THE EDGE OF THE PAVED SHOULDER OR 12 FEET FROM THE NORMAL EDGE OF PAVEMENT TO THE NEARER EDGE OF THE SIGN(S), WHICHEVER IS GREATER. THE MINIMUM CLEARANCE IN NON-INTERSTATE CORN AND OUTSIDE SECTIONS SHALL BE AT LEAST 2 FEET FROM THE FACE OF CURB TO THE NEARER EDGE OF THE SIGN(S). SUPPLEMENTAL OR SECONDARY SIGNS MOUNTED LESS THAN 7' ABOVE SIDEWALK SHALL NOT PROJECT MORE THAN 4 INCHES HORIZONTALLY INTO THE PEDESTRIAN FACILITY. IN AREAS WITH SIDEWALK, SIGN POSTS SHALL PROVIDE A 4 FOOT MINIMUM SIDEWALK CLEAR WIDTH MEASURED FROM THE POST.
4B. WHEN GUARDRAIL IS PRESENT ON BEING PROPOSED, SIGNS SHALL BE POSTED AT UNSTIPULATED DISTANCE BEHIND GUARDRAIL.
5. SINGLE PLATE, HORIZONTAL RECTANGULAR SIGNS OVER 48 INCHES IN WIDTH SHALL BE MOUNTED ON TWO POSTS WITH 2 EACH 2 INCH X 3/4 INCH X 1/2 INCH ALUMINUM OR GALVANIZED STEEL STRAPS. THE STRAPS SHALL BE FLUSH WITH THE BACK OF THE SIGN WITH EACH ANGLE, THE TOP AND BOTTOM OF THE SIGN. THE CENTERLINE OF EACH POST SHALL BE TRIPLED 1/8TH OF THE SIGN WIDTH FROM THE EDGE OF THE SIGN. SIGN PLATE DETAIL SHALL BE 6 INCH DIAMETER, DRILLED OR PUNCHED, AS SHOWN ON THE SIGN PLATE DETAILS.



Signing and Marking Design Guidelines



GENERAL NOTES - SPECIAL ROADSIDE SIGNS
1. SPECIAL ROADSIDE SIGNS SHALL CONFORM TO THE REQUIREMENTS SET FORTH IN THE MANUAL ON UNIFORM TRAFFIC CONTROL DEVICES, CURRENT EDITION, AND ALL SUPPLEMENTS THERE TO, AS WELL AS TO THE GEORGIA STANDARD SPECIFICATIONS AND/OR SPECIAL PROVISIONS.
2. SPECIAL ROADSIDE SIGNS SHALL BE FABRICATED USING ALUMINUM BOLTED EXTRUDED PANELS.
3. BACKGROUNDS FOR SPECIAL ROADSIDE SIGNS SHALL BE STANDARD INTERSTATE GREEN, TYPE 9 (VERY HIGH INTENSITY) REFLECTIVE SHEETING UNLESS SPECIFIED OTHERWISE IN THE PLANS.
4. LEGENDS FOR SPECIAL ROADSIDE SIGNS SHALL BE WHITE, TYPE 9 (VERY HIGH INTENSITY) REFLECTIVE SHEETING LETTERS, NUMERALS, SYMBOLS, AND BORDERS ON 0.032 INCH ALUMINUM CUTOUTS.
5. SHIELDS SHALL BE 5/8 INCH ALUMINUM OF THE SIZE AND SHAPE SPECIFIED IN THE PLANS, AND GEORGIA SHIELD LEGENDS SHALL BE BLACK NUMERALS AND LETTERS SILK SCREENED ON WHITE, TYPE 9 (VERY HIGH INTENSITY) REFLECTIVE SHEETING BACKGROUNDS WITH NO BORDERS. INTERSTATE SHIELDS SHALL BE PER THE MANUAL ON UNIFORM TRAFFIC CONTROL DEVICES, CURRENT EDITION.
6. FOR DETAILS OF ULS AND INTERSTATE SHIELDS AND ARROWS REFER TO THE MANUAL ON UNIFORM TRAFFIC CONTROL DEVICES, CURRENT EDITION.
7. LEGENDS FOR OVERHEAD HIGHWAY SIGNS SHALL BE APPLIED TO SIGN VIA SILK SCREEN OR DIRECT APPLY.
8. SPACING BETWEEN LETTERS OR OTHER CHARACTERS THAT IS NOT SHOWN IN THE PLANS MAY BE RECOMMENDED BY THE MANUFACTURER, BUT SHALL CONFORM TO INTERSTATE SIGNING REQUIREMENTS.
9. FOR ASSEMBLY DETAILS AND ASSEMBLY COMPONENTS DETAILS ON ALUMINUM BOLTED EXTRUDED PANELS, REFER TO GEORGIA STANDARDS 504A AND 504C.
10. FOR DETAILS OF SPECIAL ROADSIDE SIGNS SEE DETAILS OF SPECIAL ROADSIDE SIGNS.
11. SIGN ERECTION STATIONS ARE APPROXIMATE AND MAY BE ADJUSTED TO MEET FIELD CONDITIONS WHERE NECESSARY, BUT SHALL BE WITHIN THE LIMITATIONS SET FORTH IN THE MANUAL ON UNIFORM TRAFFIC CONTROL DEVICES, CURRENT EDITION. NO SIGN LOCATION SHALL BE CHANGED BY THE CONTRACTOR OR BY THE PROJECT ENGINEER WITHOUT PRIOR APPROVAL FROM THE DISTRICT OFFICE OF TRAFFIC OPERATIONS.
12. HORIZONTAL CLEARANCE FOR SPECIAL ROADSIDE SIGNS SHALL BE 32 FEET FROM THE NORMAL EDGE OF PAVEMENT TO THE NEARER EDGE OF THE SHOULDER UNLESS SPECIFIED OTHERWISE IN THE PLANS.
13. SPECIAL ROADSIDE SIGNS ERECTED ON STEEP SLOPES SHALL HAVE A MINIMUM CLEARANCE OF 10 FEET ABOVE THE NORMAL EDGE AND MAXIMUM HEIGHT OF 40 FEET ABOVE THE NORMAL EDGE OF PAVEMENT TO THE BOTTOM OF THE SIGN.
14. HEIGHT SIGNS SHALL BE ERECTED WITHIN A RANGE OF 75 FEET MINIMUM TO 100 FEET MAXIMUM FROM THE NORMAL EDGE OF THE ROAD. A MINIMUM CLEARANCE OF 2 FEET FROM THE TOP OF THE SIGN AND MINIMUM PAVED SHOULDERS TO THE RIGHT AND LEFT EDGES OF THE SIGN, RESPECTIVELY SHALL BE MAINTAINED.
15. POST LENGTHS, POST SIZES, AND FOOTING SIZES FOR SPECIAL ROADSIDE SIGNS ARE ESTIMATED ONLY. IT SHALL BE THE RESPONSIBILITY OF THE CONTRACTOR TO DETERMINE THE CORRECT LENGTHS AND SIZES ACCORDING TO GEORGIA STANDARDS PRIOR TO ORDERING MATERIALS FOR ERECTION AND FOUNDATION DETAILS FOR SPECIAL ROADSIDE SIGNS WITH BEARING POSTS, REFER TO GEORGIA STANDARDS 503A, 503B, AND 503C.
16. GALVANIZED STEEL BEAMS SHALL HAVE ALL IDENTIFICATION NUMBERS RE-ESTABLISHED AFTER COMPLETION OF GALVANIZING.
17. ERECTION AND PLACING REINFORCEMENT STEEL AND SLAB POSTS AS SHOWN IN THE FOOTING DETAILS ON GEORGIA STANDARD 503A.
18. THE NEAR EDGE OF SIGNS ERECTED BEHIND GUARDRAIL SHALL BE 6 FEET BEHIND THE FACE OF THE GUARDRAIL.
19. THE CONTRACTOR SHALL ENSURE THAT ALL SPECIAL ROADSIDE SIGNS INSTALLED BY THIS PROJECT HAVE A MINIMUM SIGHT DISTANCE OF 500 FEET, CLEARING OF OBSTACLES TO OBTAIN THE MINIMUM SIGHT DISTANCE SHALL BE IN ACCORDANCE WITH THE GEORGIA STANDARD SPECIFICATIONS. THE COST FOR THIS WORK SHALL BE INCLUDED IN THE OVERALL PRICE BID FOR THE PROJECT.
20. SPECIAL ROADSIDE SIGNS MARKED WITH AN ANTI-SPECIFIC DESIGN, THE CONTRACTOR SHALL NOT CHANGE THESE POSTS IN ANY WAY WITHOUT APPROVAL FROM THE DISTRICT OFFICE OF TRAFFIC OPERATIONS. THE COST FOR THIS WORK SHALL BE INCLUDED IN THE OVERALL PRICE BID FOR THE PROJECT.



AXIS ENGINEERING CONSULTANTS
LEESBURG * VALDOSTA * WARNER ROBINS
REVISIONS table with columns for No., DATE, and DESCRIPTION.
GENERAL NOTES
ORR ROAD RESURFACING
PROJECT NO. 25-25153
DATE: 11/06/2025
DRAWN BY: BJM
CHECK BY: BJM
LOWNDDES COUNTY BOARD OF COMMISSIONERS
SHEET NO. C1.1



KEY NOTES:

- ① INSTALL OBJECT MARKER OM-3R SIGN 2' OFF FROM PIPE
- ② INSTALL OBJECT MARKER OM-3L SIGN 2' OFF FROM PIPE

REVISIONS	
No.	DESCRIPTION
1	DATE 11-13-25
2	REVISED PER COUNTY COMMENTS
3	
4	
5	
6	



ROADWAY RESURFACING PLAN
ORR ROAD RESURFACING



PROJECT NO. 25-25153
DATE: 11/06/2025
DRAWN BY: BJM
CHECK BY: BMI

SHEET NO. C2.0

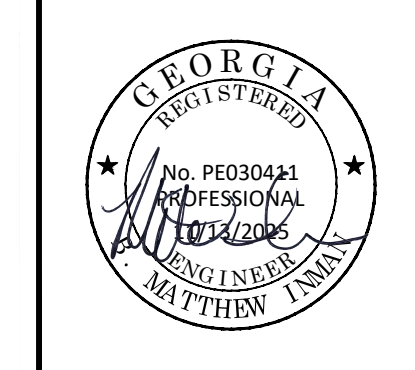
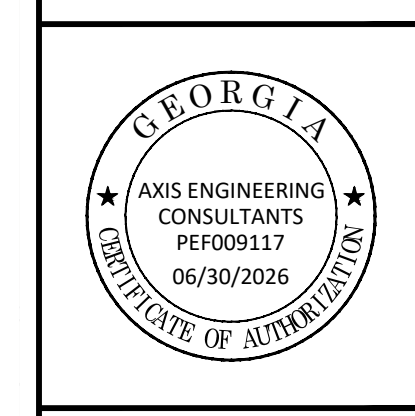


No.	DATE	DESCRIPTION
1	11-13-25	REVISED PER COUNTY COMMENTS
2	-	-
3	-	-
4	-	-
5	-	-
6	-	-



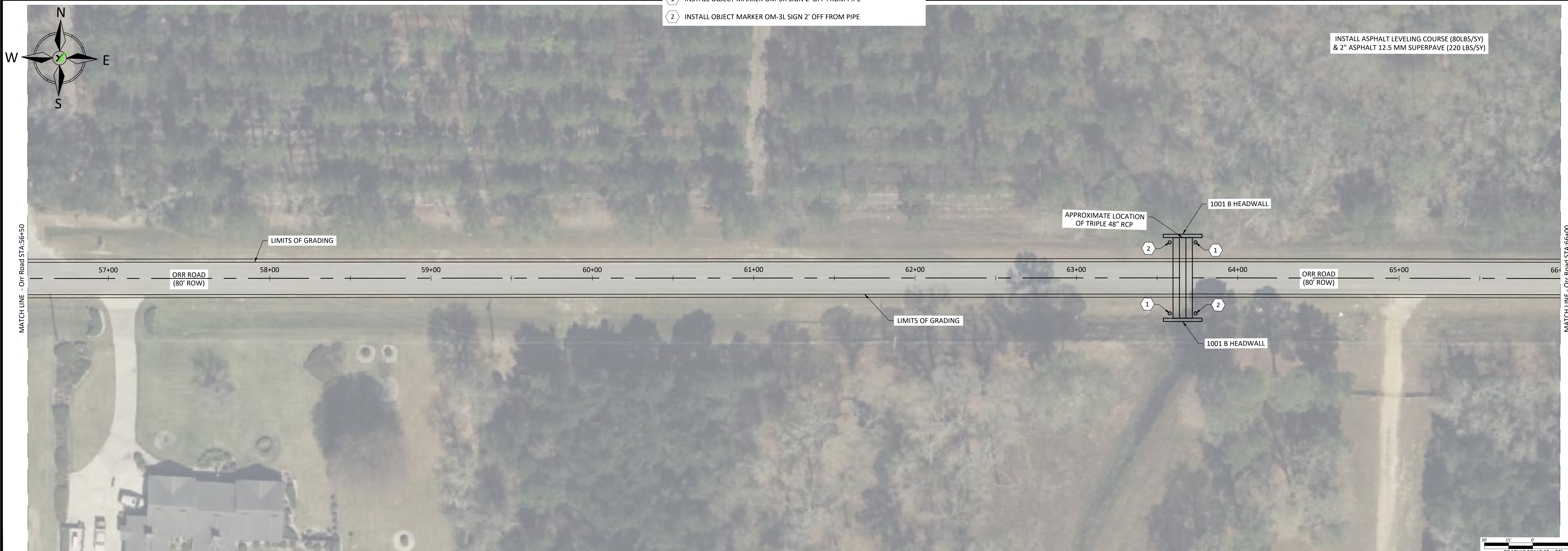
ROADWAY RESURFACING PLAN

ORR ROAD RESURFACING



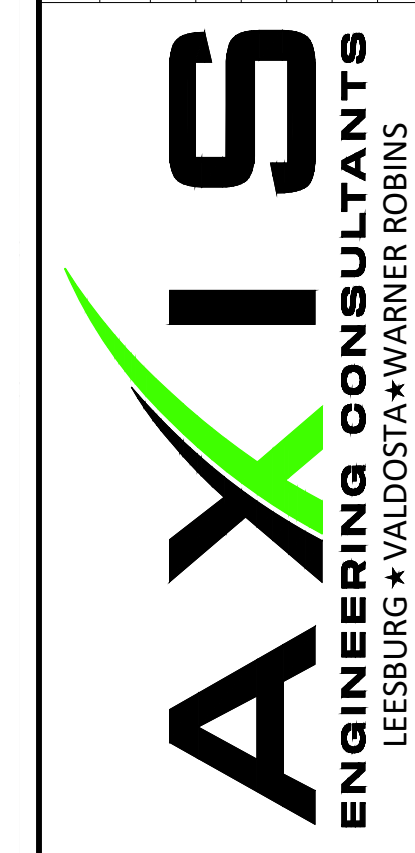
PROJECT NO. 25-25153
 DATE: 11/06/2025
 DRAWN BY: BJM
 CHECK BY: BMI

SHEET NO.
C2.1



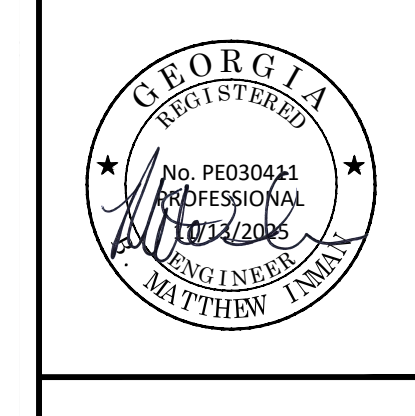
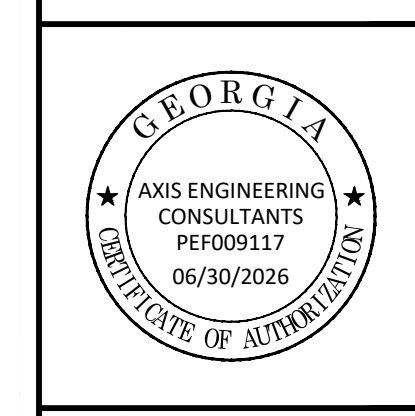
- KEY NOTES:**
- ① INSTALL OBJECT MARKER OM-3R SIGN 2' OFF FROM PIPE
 - ② INSTALL OBJECT MARKER OM-3L SIGN 2' OFF FROM PIPE

No.	DATE	DESCRIPTION
1	11-13-25	REVISED PER COUNTY COMMENTS
2	-	-
3	-	-
4	-	-
5	-	-
6	-	-



ROADWAY RESURFACING PLAN

ORR ROAD RESURFACING

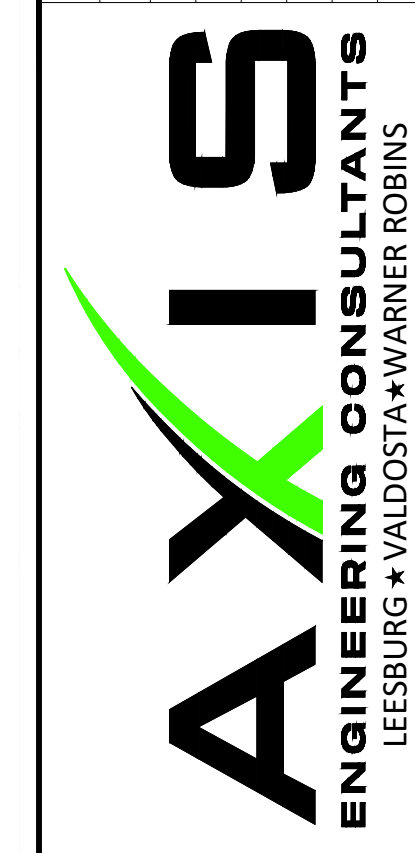


PROJECT NO. 25-25153
 DATE: 11/06/2025
 DRAWN BY: BJM
 CHECK BY: BMI

SHEET NO.
C2.2

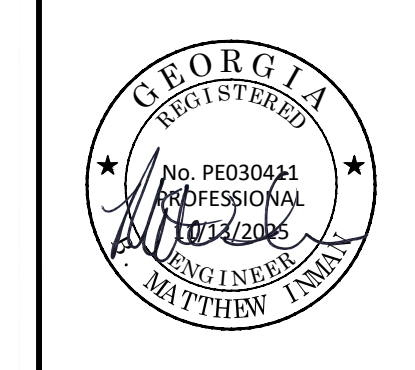
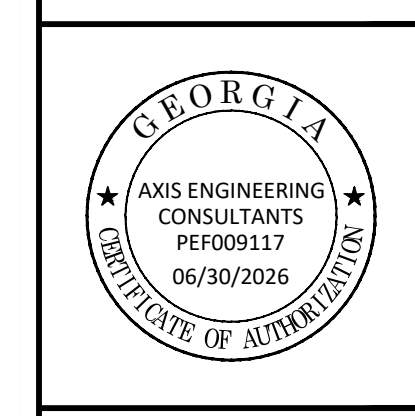


No.	DATE	DESCRIPTION
1	11-13-25	REVISED PER COUNTY COMMENTS
2	-	-
3	-	-
4	-	-
5	-	-
6	-	-



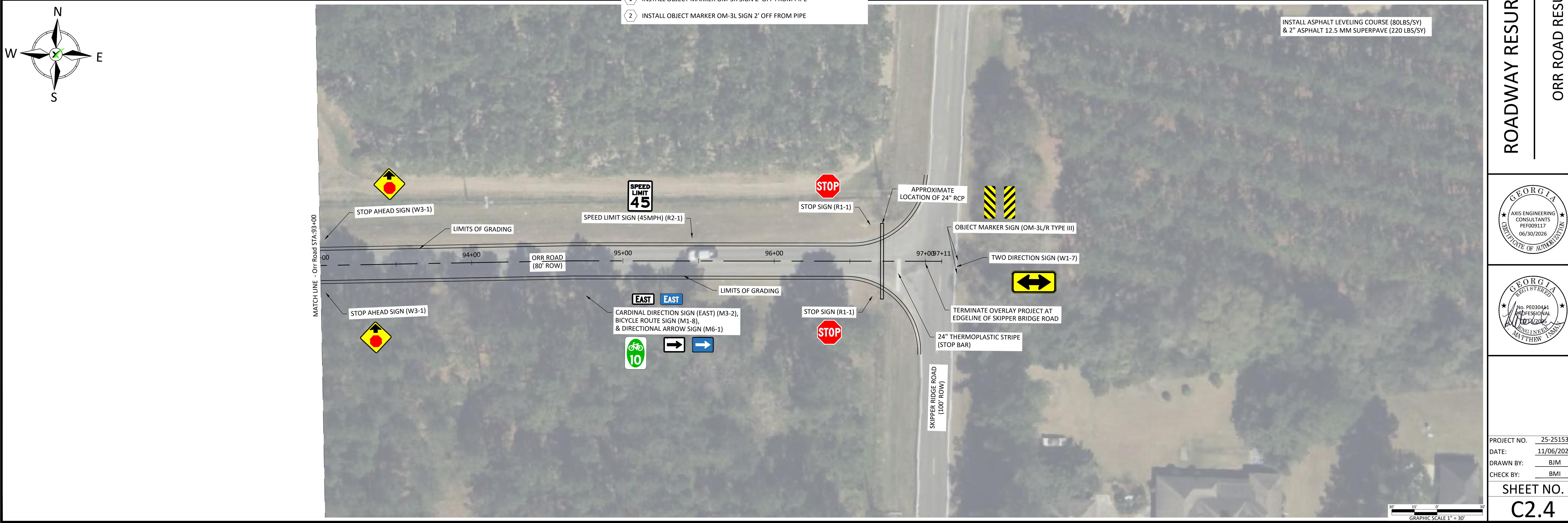
ROADWAY RESURFACING PLAN

ORR ROAD RESURFACING



PROJECT NO. 25-25153
 DATE: 11/06/2025
 DRAWN BY: BJM
 CHECK BY: BMI

SHEET NO.
C2.3



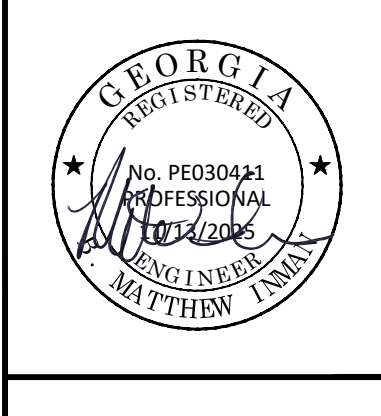
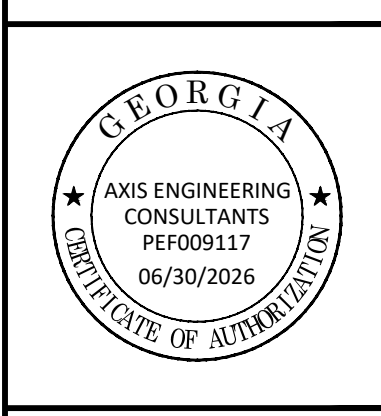
KEY NOTES:

- ① INSTALL OBJECT MARKER OM-3R SIGN 2' OFF FROM PIPE
- ② INSTALL OBJECT MARKER OM-3L SIGN 2' OFF FROM PIPE

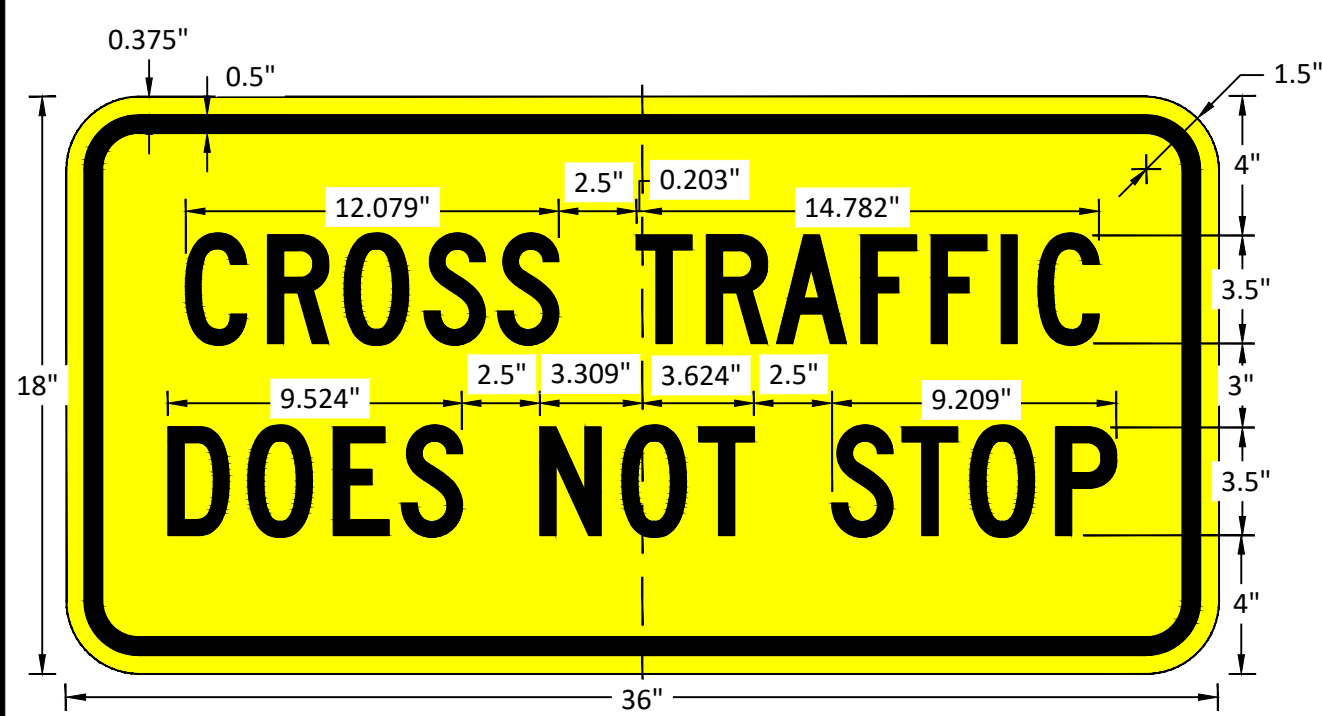
NO.	DATE	DESCRIPTION
1	11-13-25	REVISED PER COUNTY COMMENTS
2	-	-
3	-	-
4	-	-
5	-	-
6	-	-



ROADWAY RESURFACING PLAN
ORR ROAD RESURFACING



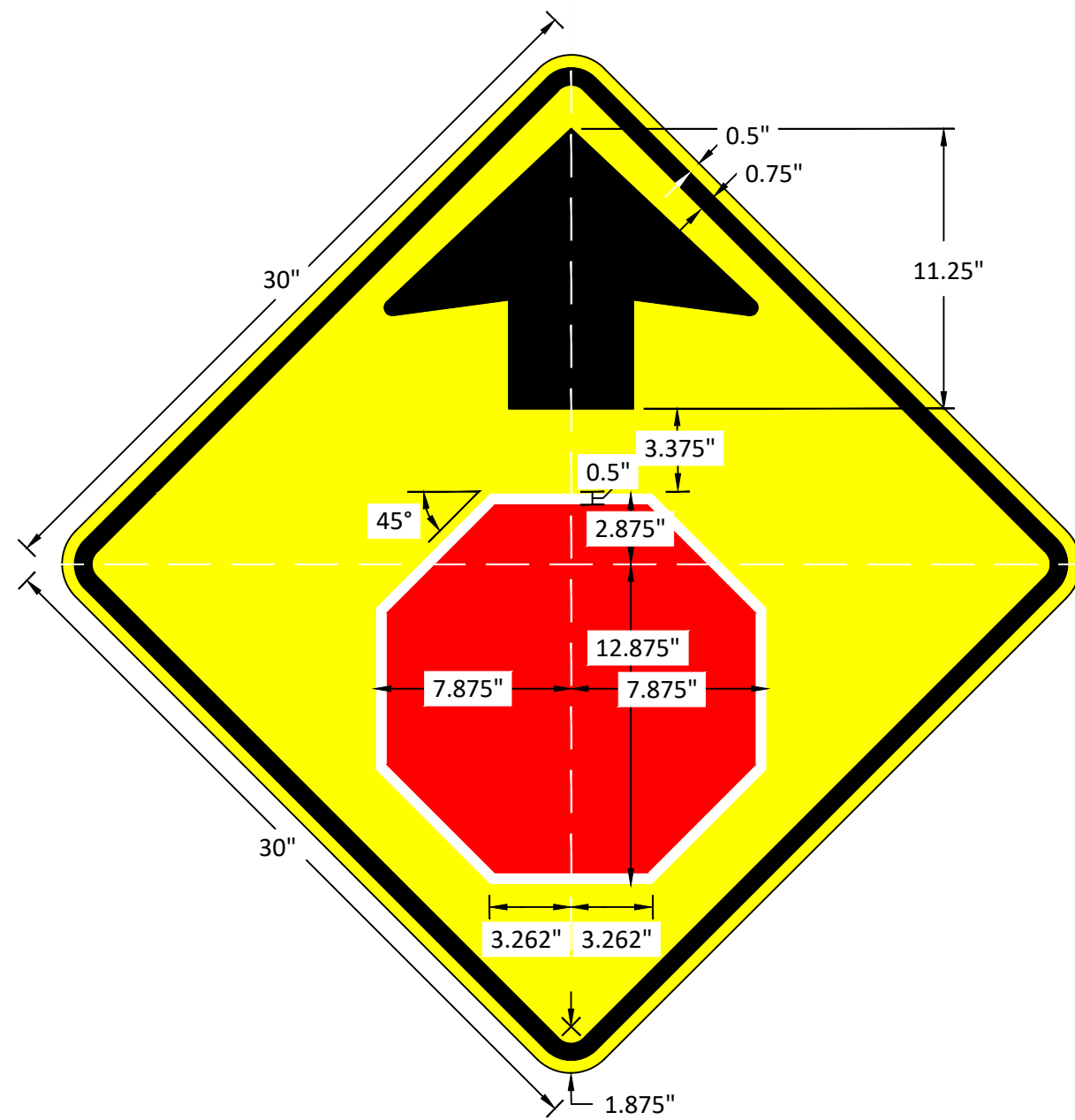
PROJECT NO. 25-25153
 DATE: 11/06/2025
 DRAWN BY: BJM
 CHECK BY: BMI
 SHEET NO. C2.4



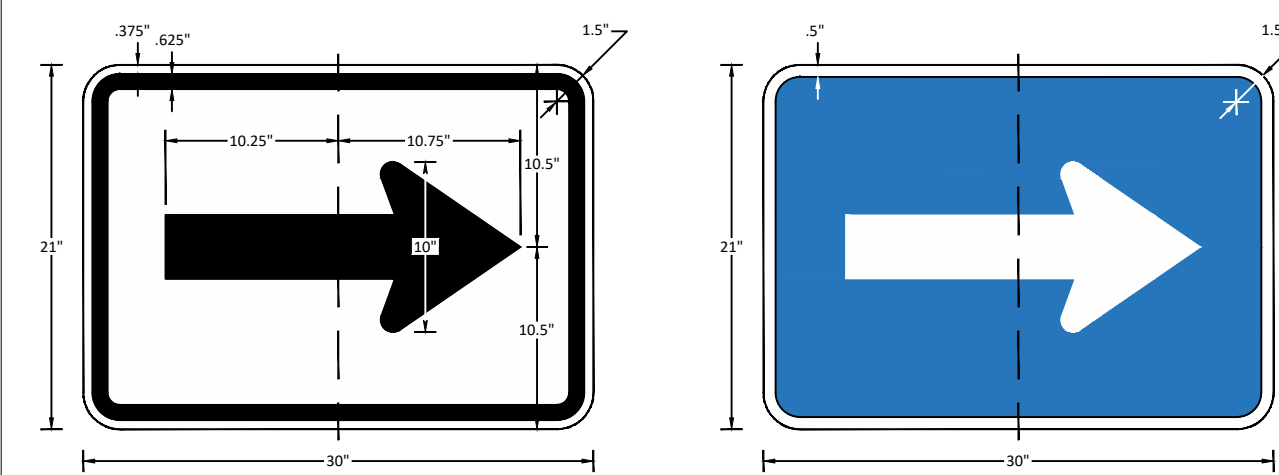
W4-4P CROSS TRAFFIC DOES NOT STOP SIGN DETAIL
NOT TO SCALE



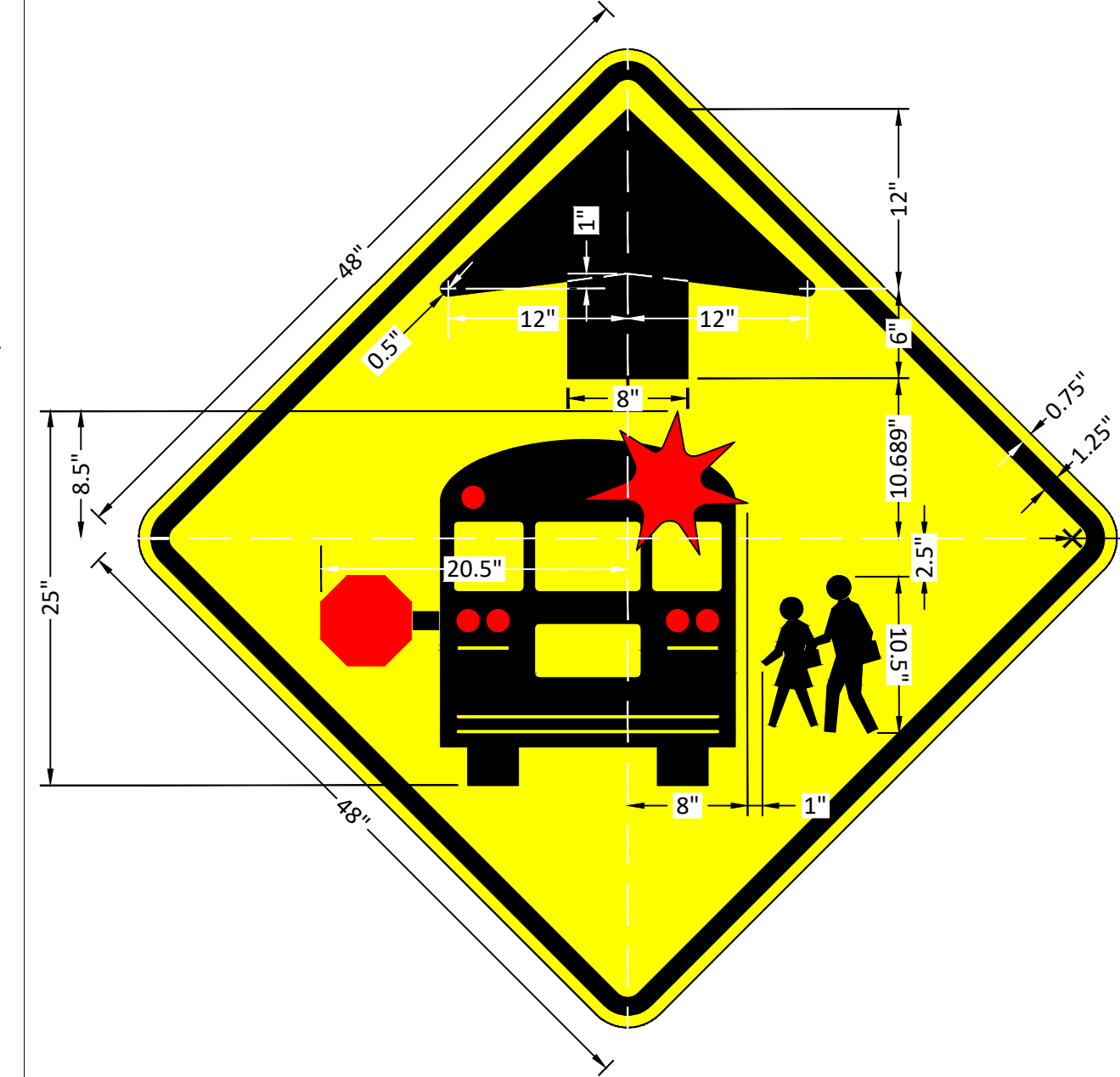
R2-1 SPEED LIMIT SIGN DETAIL
NOT TO SCALE



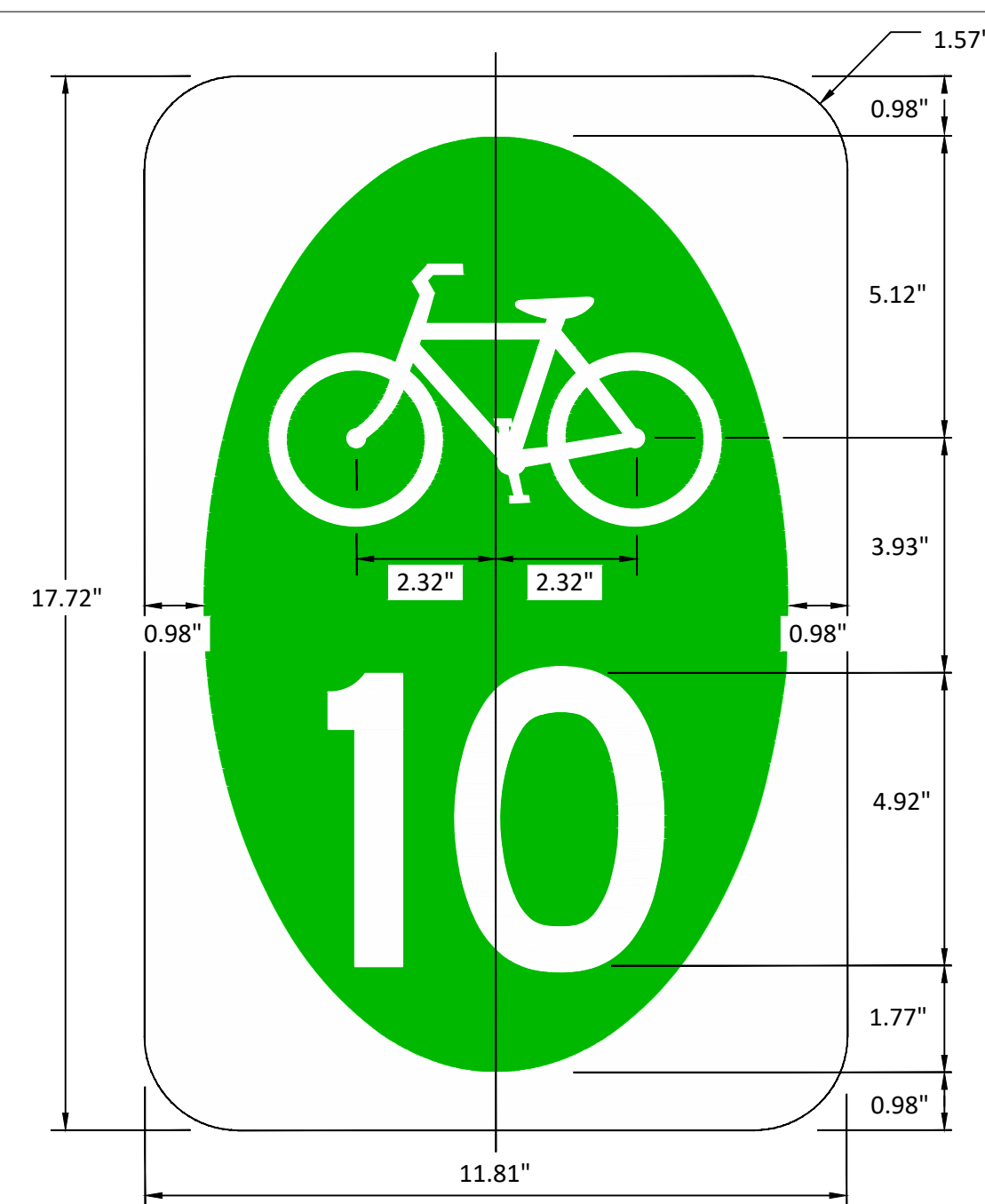
W3-1 STOP AHEAD SIGN DETAIL
NOT TO SCALE



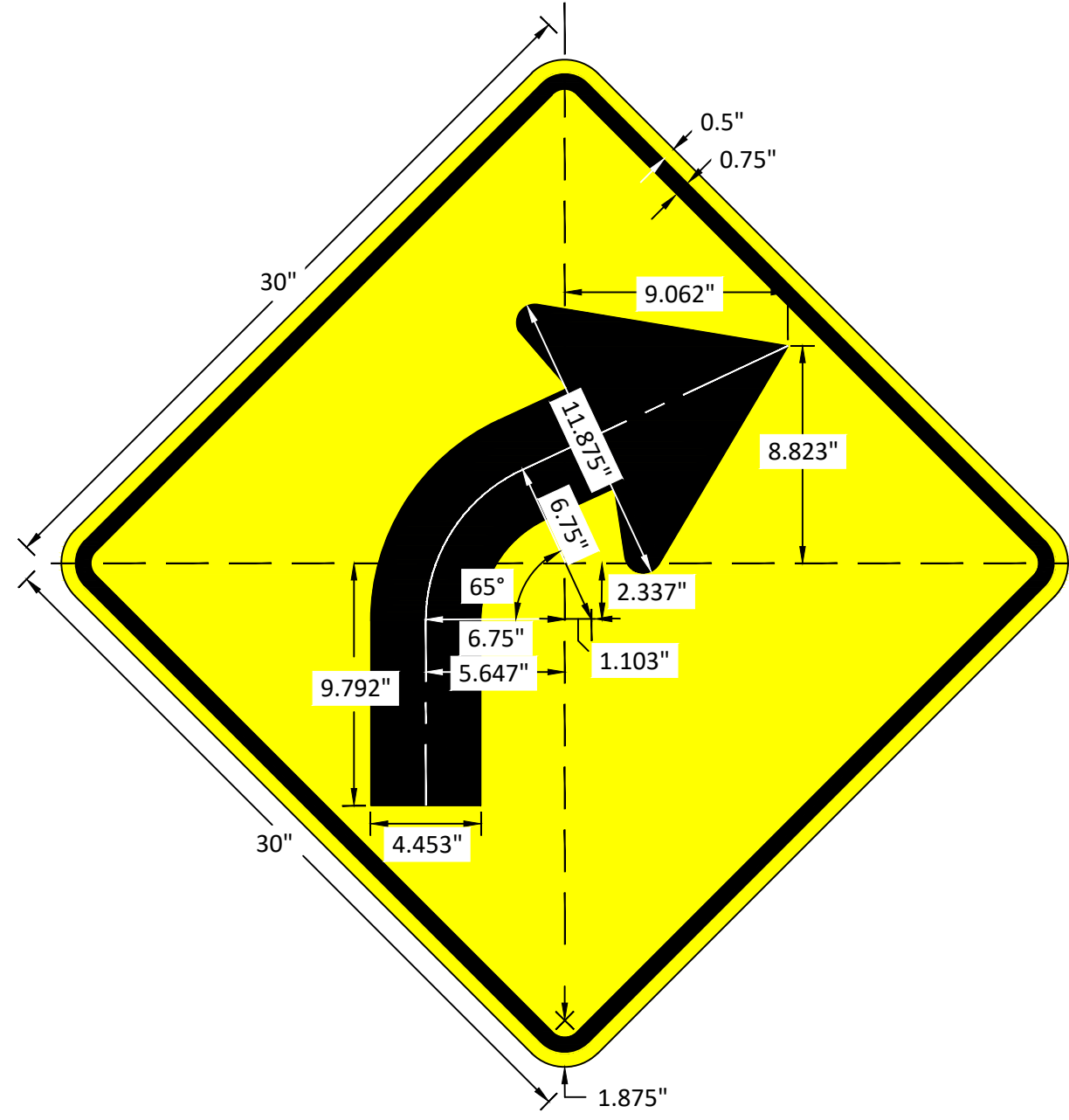
M6-1 DIRECTIONAL ARROW AUXILIARY DETAIL
NOT TO SCALE



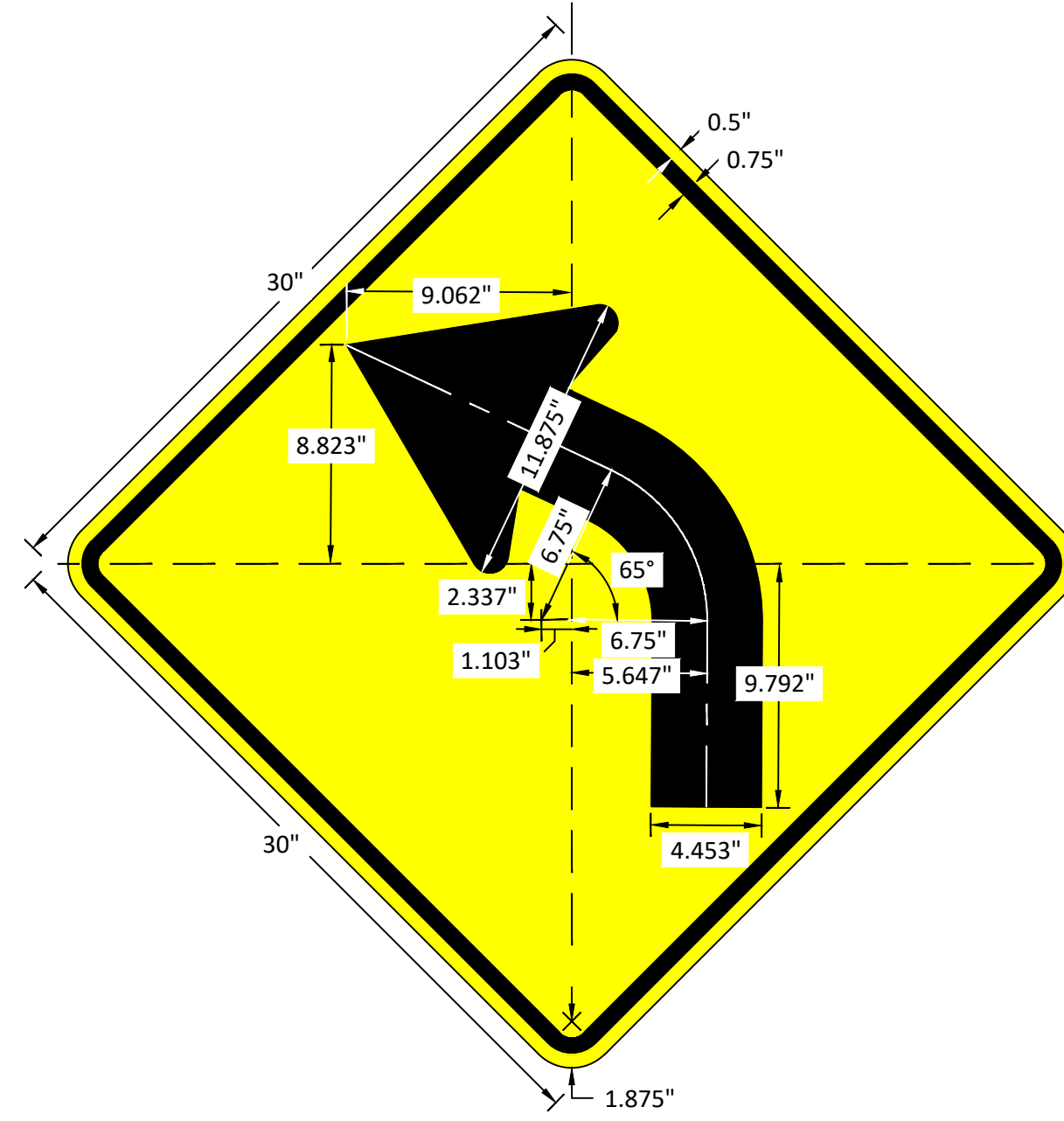
S3-1 SCHOOL BUS STOP AHEAD SIGN DETAIL
NOT TO SCALE



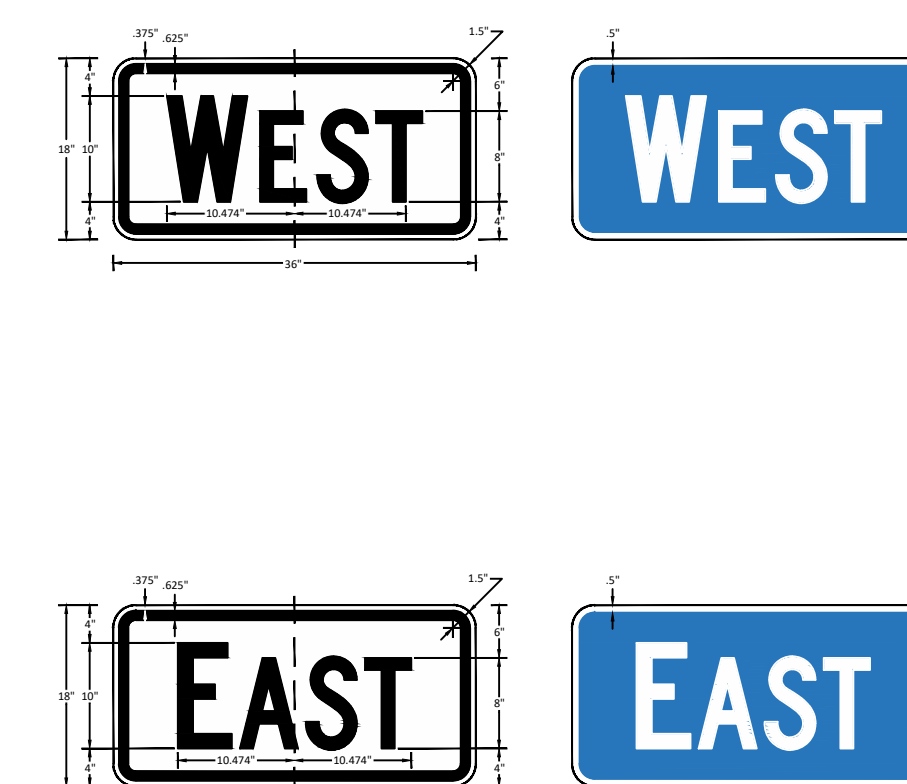
M1-8 BICYCLE ROUTE SIGN DETAIL
NOT TO SCALE



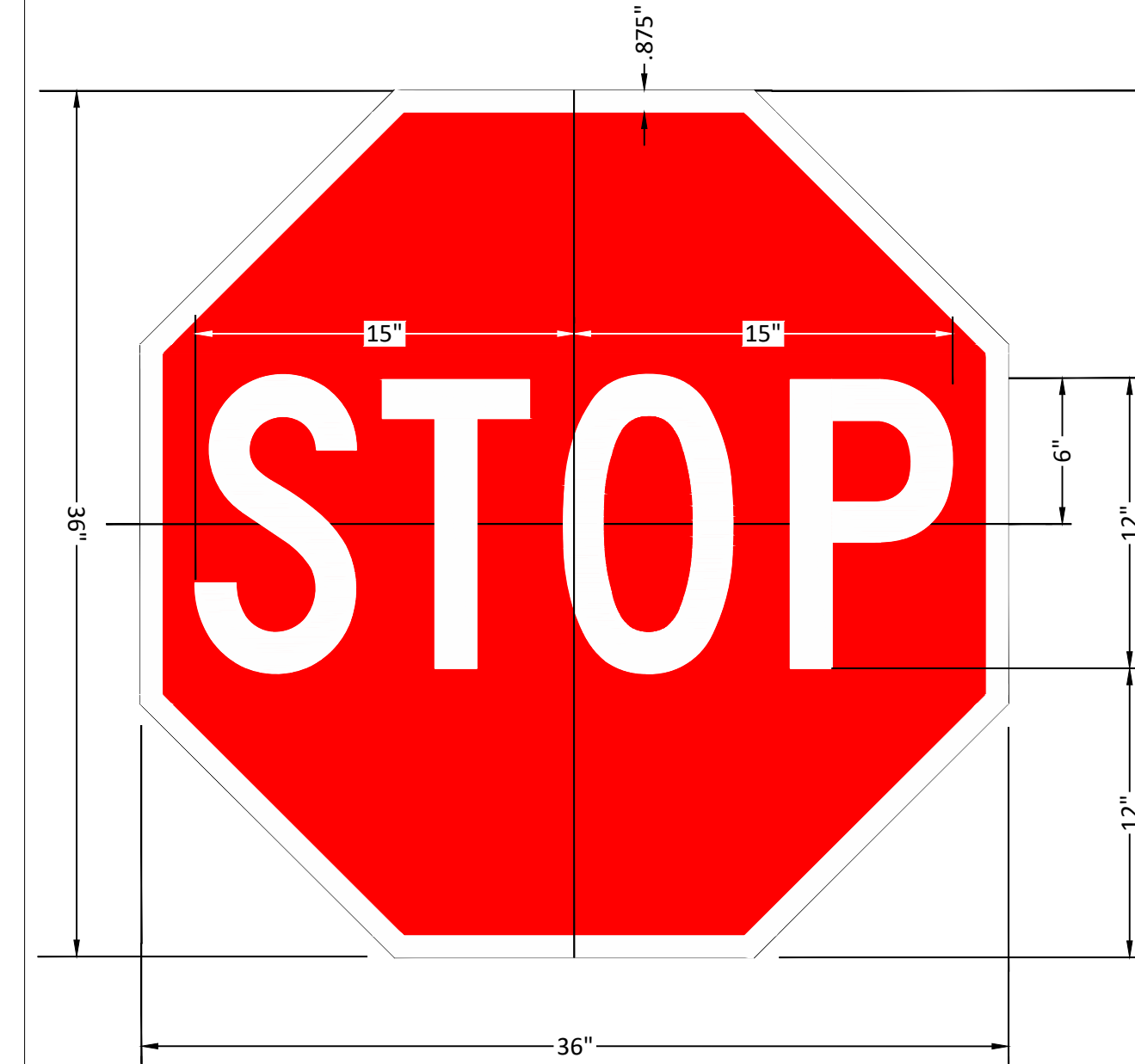
W1-2R CURVE SIGN DETAIL
NOT TO SCALE



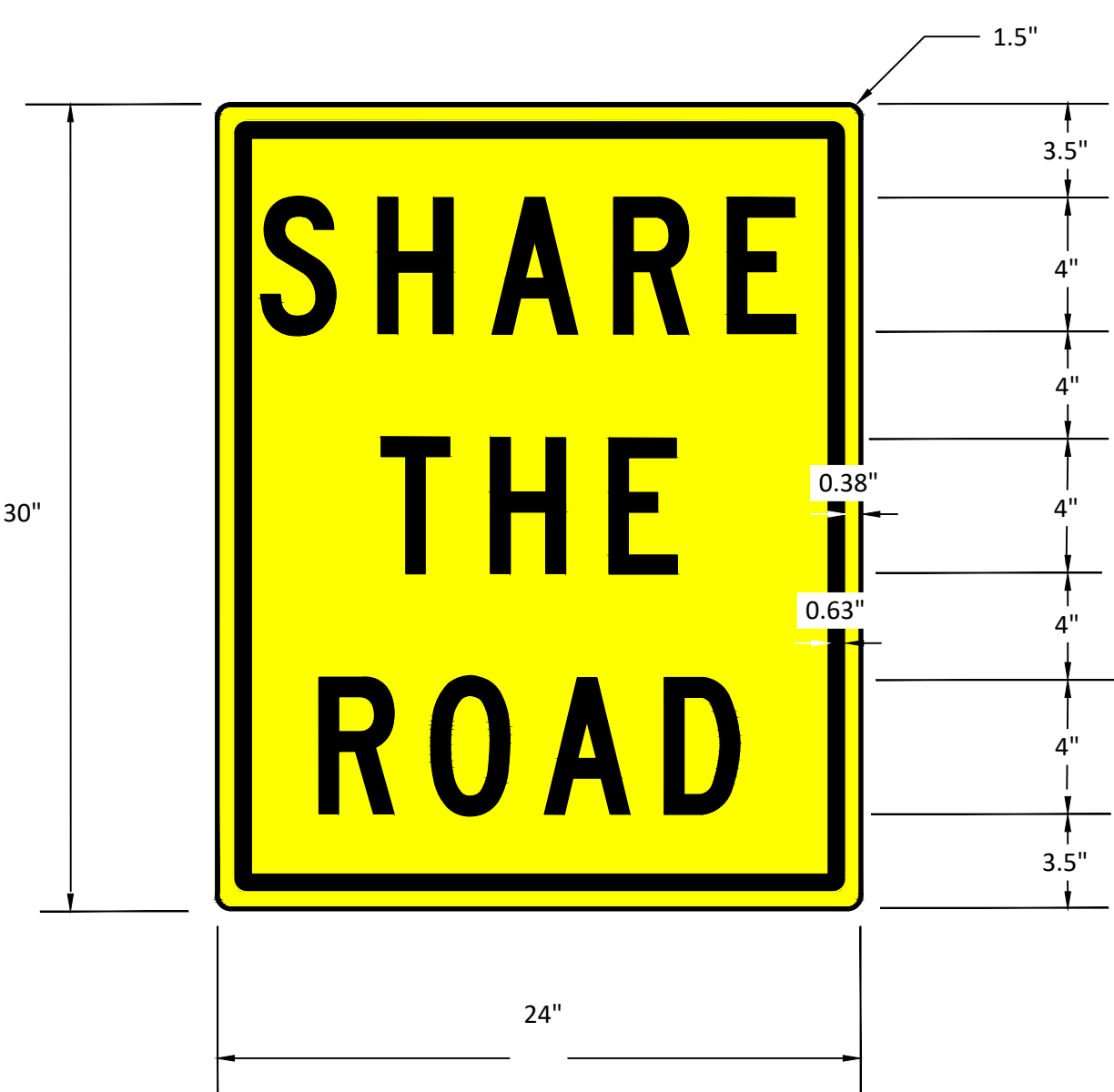
W1-2L CURVE SIGN DETAIL
NOT TO SCALE



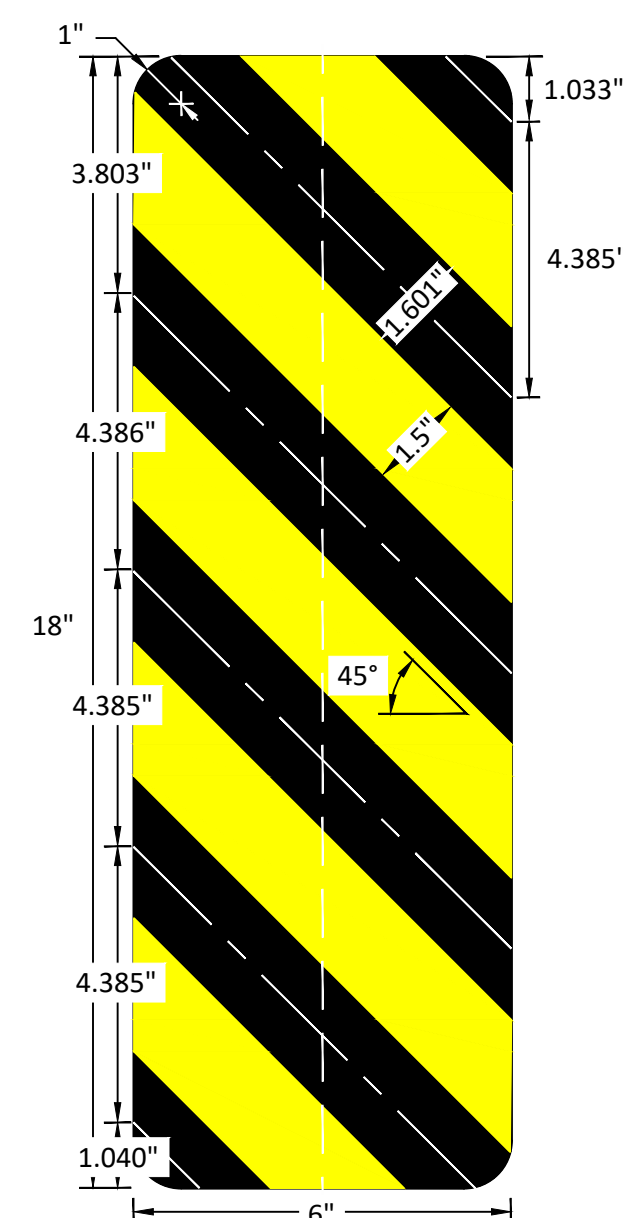
M3-4 & M3-2 WEST & EAST SIGN DETAIL
NOT TO SCALE



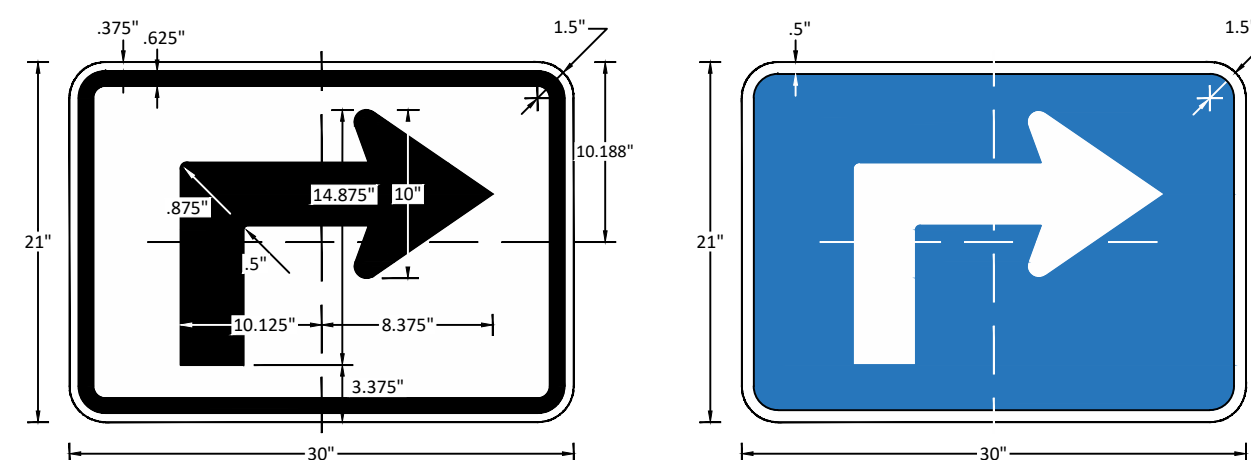
R1-1 STOP SIGN DETAIL
NOT TO SCALE



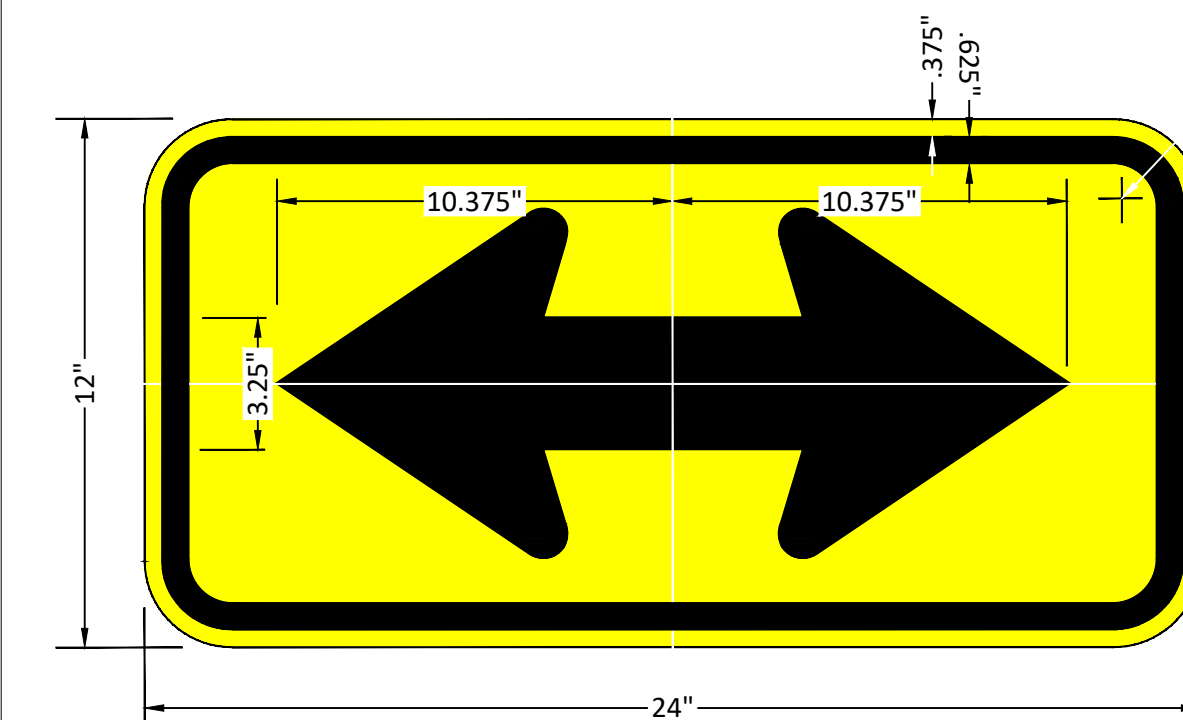
W16-1P SHARE THE ROAD SIGN DETAIL
NOT TO SCALE



OM-3L/R TYPE III OBJECT MARKER SIGN DETAIL
NOT TO SCALE



M5-1 ADVANCED TURN ARROW AUXILIARY DETAIL
NOT TO SCALE



W1-7 TWO DIRECTION LARGE ARROW SIGN DETAIL
NOT TO SCALE

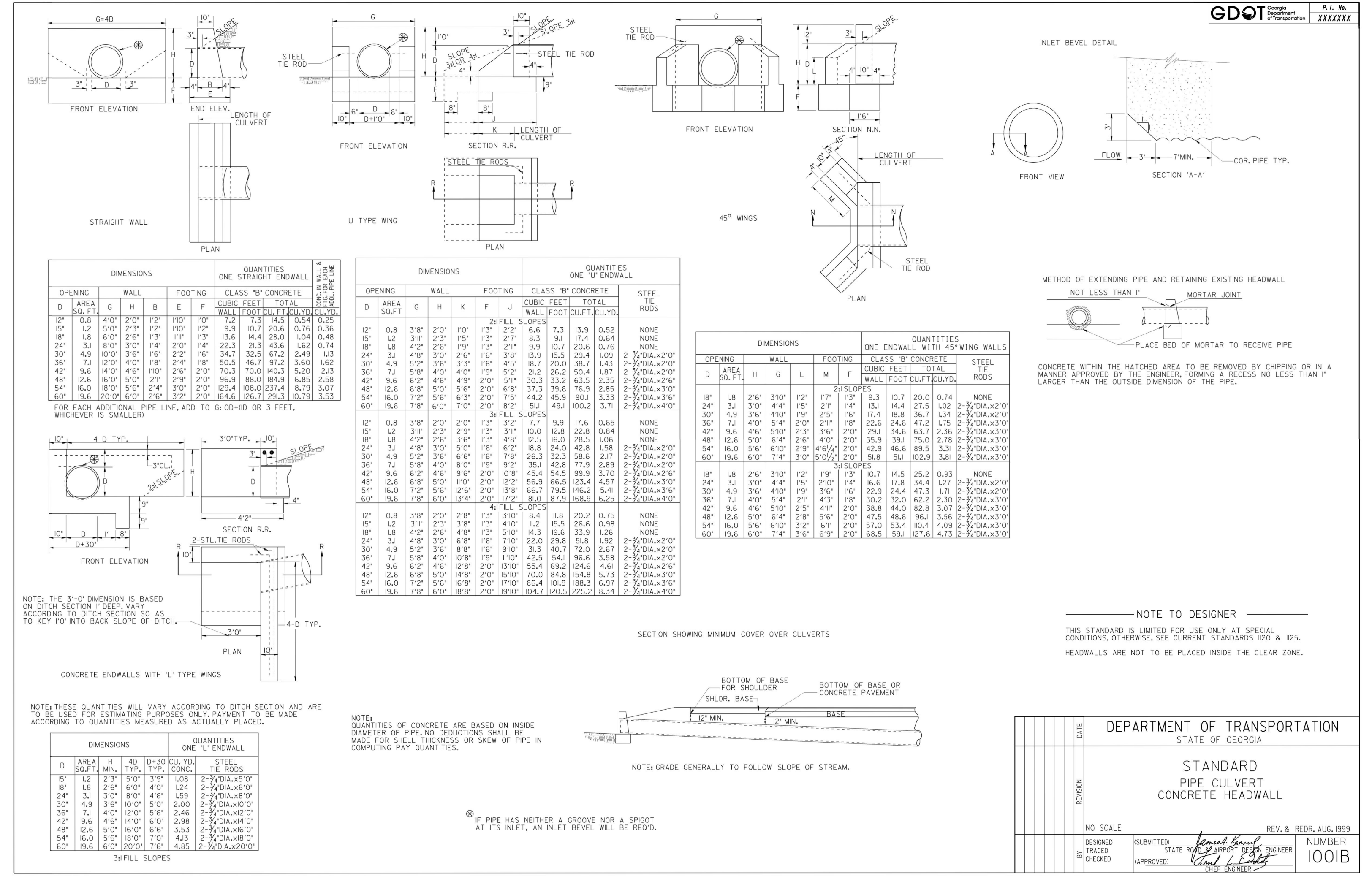
AXIS
ENGINEERING CONSULTANTS
LEESBURG • VALDOSTA • WARNER ROBINS

GEORGIA
REGISTERED PROFESSIONAL ENGINEER
MATTHEW TANNA

REVISIONS		
No.	DATE	DESCRIPTION
1	11-13-25	REVISED PER COUNTY COMMENTS
2	-	-
3	-	-
4	-	-
5	-	-
6	-	-

CONSTRUCTION DETAILS
 ORR ROAD RESURFACING

LOWNDES COUNTY, GEORGIA BOARD OF COMMISSIONERS	SCALE: NOT TO SCALE	PROJECT NO. 25-25153 DATE: 11/06/2025 DRAWN BY: BJM CHECK BY: BMI SHEET NO. C3.0
---	------------------------	--



PIPE CULVERT CONCRETE HEADWALL DETAIL - GDOT 1001B
NOT TO SCALE

AXIS ENGINEERING CONSULTANTS
LEESBURG • VALDOSTA • WARNER ROBINS

GEORGIA REGISTERED PROFESSIONAL ENGINEER
No. PE009117
06/30/2026

No.	DATE	DESCRIPTION
1	11-13-25	REVISED PER COUNTY COMMENTS
2	-	-
3	-	-
4	-	-
5	-	-
6	-	-

CONSTRUCTION DETAILS
ORR ROAD RESURFACING

PROJECT NO. 25-25153
DATE: 11/06/2025
DRAWN BY: BJM
CHECK BY: BMI

LOWNDES COUNTY BOARD OF COMMISSIONERS

SCALE: NOT TO SCALE

SHEET NO. C3.1